



CAMPUS VISIT GUIDE

Office of Undergraduate Admission

Ashe Administration Building

Room 132

1252 Memorial Drive

Coral Gables, FL 33146

Phone: 305-284-4323

Includes:

- Directions/Maps to campus from MIA, FLL, I-95, the Florida Turnpike, or I-75
- Hotel accommodations near campus
- Transportation options
- Parking on campus
- Map from campus garage to Office of Admission
- Advice on what to wear for your visit
- Info about campus tours, information sessions and their schedule
- Info about where to eat on campus

PHYSICAL ADDRESS (for online map search)*

University of Miami • Pavia Parking Garage
5615 Pavia Street • Coral Gables, FL 33146

*Google Maps is the recommended online map tool for directions to UM.

Have our office number handy... just in case! Phone: 305-284-4323

FROM MIAMI INTERNATIONAL AIRPORT (MIA)

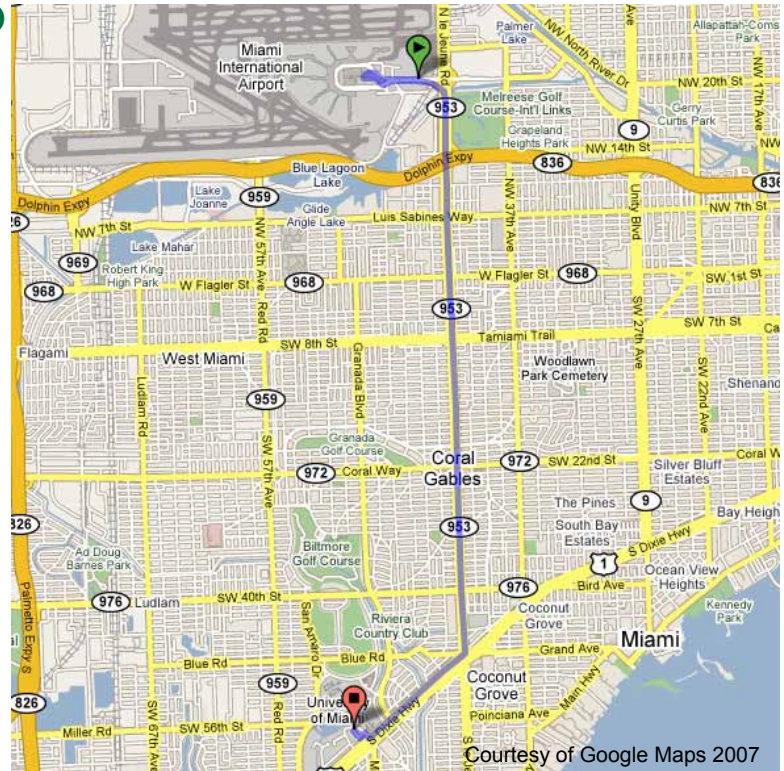
Time to allow for travel: approximately 30 minutes

(there's always construction on LeJeune Road)

- Follow signs to exit airport
- Turn towards NW 42nd Ave/LeJeune Rd./SR-953
- Follow the South LeJeune ramp to SR-836 W/ Coral Gables
- Merge on to NW 42nd Ave/Le Jeune Rd. (4.5 miles)
- Turn right at Ponce De Leon Blvd. or US-1* (1.0 mile)
- Turn right at Stanford Drive (1.0 mile)
- Make a left turn after the main guard gate
- Take your first right towards the entrance of Pavia Garage**

*Ponce De Leon Blvd. and US-1 run parallel near campus. If you miss Ponce, you can also turn right on US-1.

**If Pavia Garage is full, please ask the guards to direct you to Ponce Garage. You can take the Ponce/Fountain Hurry Cane shuttle from the Ponce Garage to the Ashe Building (Office of Admission).



Courtesy of Google Maps 2007

FROM FORT LAUDERDALE/HOLLYWOOD AIRPORT (FLL) AND I-95

Time to allow for travel: approximately 1½ hours

- Follow signs to exit airport
- Head west on Terminal Drive (0.5 miles)
- Merge onto N Federal Hwy/US-1 S via the ramp to Dania Beach/Hollywood (0.6 miles)
- Slight right at Griffin Rd. (1.4 miles)
- Turn left to merge onto I-95 S toward Miami
- Go south on I-95 toward Miami (23.4 miles)
- I-95 south becomes S Dixie Hwy/US-1 S, stay on US-1 (5 miles)
- Turn right at Stanford Drive
- Make a left turn after the main guard gate
- Take your first right towards the entrance of Pavia Garage*

*If Pavia Garage is full, please ask the guards to direct you to Ponce Garage. You can take the Ponce/Fountain Hurry Cane shuttle from the Ponce Garage to the Ashe Building (Office of Admission).



Courtesy of Google Maps 2007

UNIVERSITY OF MIAMI



PHYSICAL ADDRESS (for online map search)*

University of Miami • Pavia Parking Garage
5615 Pavia Street • Coral Gables, FL 33146

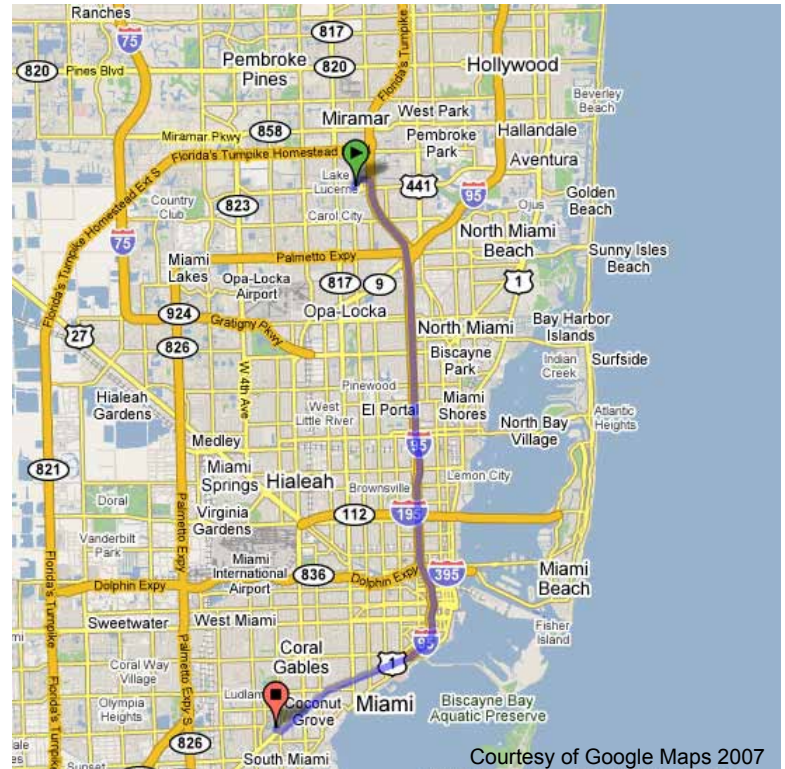
*Google Maps is the recommended online map tool for directions to UM.

Have our office number handy... just in case! Phone: 305-284-4323

FROM THE FLORIDA TURNPIKE

- Take the Florida Turnpike South
- At the Golden Glades Interchange, take the I-95 South exit
- Go south on I-95 toward Miami (12.2 miles)
- I-95 south becomes S Dixie Hwy/US-1 S, stay on US-1 (5 miles)
- Turn right at Stanford Drive
- Make a left turn after the main guard gate
- Take your first right towards the entrance of Pavia Garage*

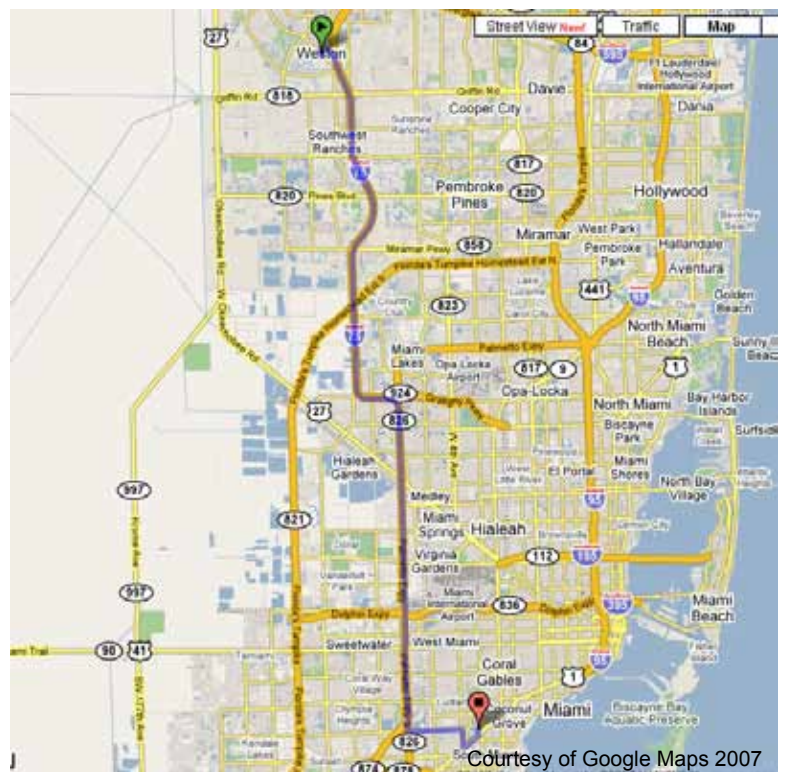
*If Pavia Garage is full, please ask the guards to direct you to Ponce Garage. You can take the Ponce/Fountain Hurry Cane shuttle from the Ponce Garage to the Ashe Building (Office of Admission).



FROM I-75

- Go South on I-75
- Exit I-75 at 826 South
- Continue south on 826 South
- Exit 826 South at Miller Road (SW 56th St.)
- Turn left on Miller Road (SW 56th St.)
- Turn right on San Amaro Dr.
- Turn left on Ponce De Leon Blvd.
- Turn left on Stanford Dr.
- Make a left turn after the main guard gate
- Take your first right towards the entrance of Pavia Garage*

*If Pavia Garage is full, please ask the guards to direct you to Ponce Garage. You can take the Ponce/Fountain Hurry Cane shuttle from the Ponce Garage to the Ashe Building (Office of Admission).



HOTEL ACCOMMODATIONS NEAR CAMPUS

University of Miami Holiday Inn
1350 South Dixie Highway
Coral Gables, FL. 33146
Phone: 305-667-5611
www.hicoralgables.com

Marriott Miami Dadeland
9090 South Dadeland Blvd.
Miami, Florida 33156
Phone: 305-670-1035
www.marriott.com/miadd

Sonesta Hotel & Suites
2889 McFarlane Road
Coconut Grove, FL 33133
Phone: 305-529-2828
www.sonesta.com/CoconutGrove

The Westin Colonnade Coral Gables Hotel
180 Aragon Avenue
Coral Gables FL. 33131
Phone: 305-569-6579
www.starwoodhotels.com/westin

The Biltmore Hotel
1200 Anastasia Avenue
Coral Gables, FL 33134
Phone: 305-445-1926
www.biltmorehotel.com

Courtyard Miami Dadeland
9075 South Dadeland Blvd.
Miami, Florida 33156
Phone: 305-670-1220
www.marriott.com/miacy

Visit www.miami.edu/travel for *possible* discount rates* at these hotels, as well as information about other area hotels that may offer UM discounts.

*Please note that these discount rates are 1) not guaranteed and 2) are not arranged by the Office of Admission. The hotels offer these discounts at their discretion. Contact the hotel for specific information pertaining to your travel plans.

TRANSPORTATION OPTIONS

From MIA
Super Shuttle – contact for rates
Web site: www.supershuttle.com
Phone: 305-871-2000

Taxi/Cab – approximately \$25 from MIA
We recommend: Yellow Cab of Southwest
(if calling for a taxi from campus/hotel to MIA)
Phone: 305-666-6668

Provide one of these taxi drop-off addresses:

UM University Center	Office of Admission
Stanford Drive/Circle	Ashe Building
1301 Stanford Drive	1252 Memorial Drive
Coral Gables, FL 33146	Coral Gables, FL 33146

PARKING ON CAMPUS

Parking at Pavia Garage or Ponce De Leon Garage is strongly recommended.

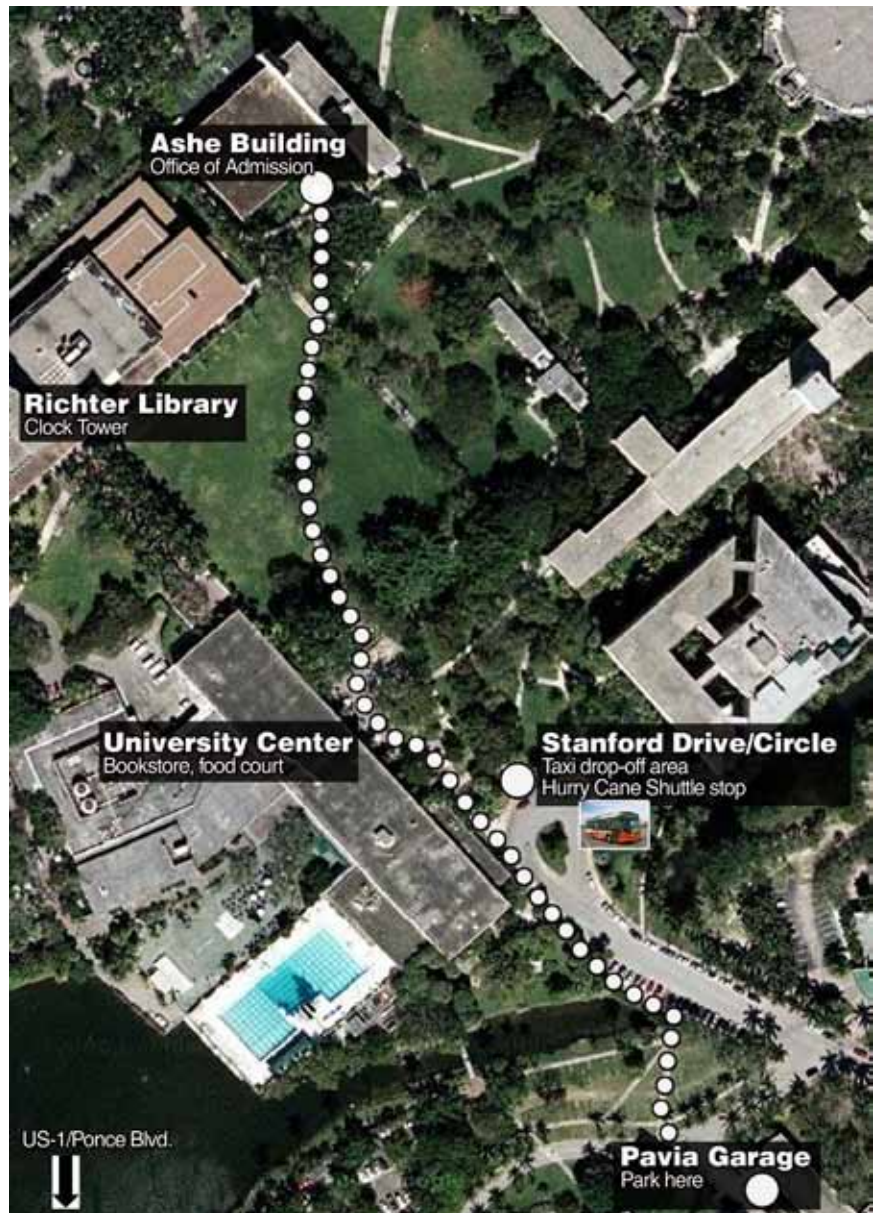
Metered parking is available, but not advisable. Hourly parking maximums are low, parking penalties are high, and metered parking is diligently enforced by city police.

COST OF PARKING ON CAMPUS

Parking passes are \$7 per day. Parking pass machines are located on the ground floor of each garage and will accept cash or credit cards (Visa or MasterCard).

ONCE ON CAMPUS, WHERE DO I MEET THE TOUR/INFO SESSION?

Allow approximately 10 minutes to walk from the Pavia Garage to the Office of Admission (Ashe Building, room 132). See map on right.



Courtesy of Google Maps 2007

WHAT TO WEAR

- Casual, comfortable wear is always recommended for our campus visits
- Wear comfortable shoes for the walking campus tour
- Prepare for the possibility of rain showers during the months of June-November
- We strongly recommend that you check www.weather.com for more specific information during your planned visit. Enter 33146 in the local weather search box

CAMPUS TOURS

Our walking tours are guided by members of the President's 100 organization. These current students take you on a campus tour and share their UM experiences with you. The walking tour lasts approximately 45 minutes to an hour. The tour begins and ends at the Office of Admission in the Ashe Building (room 132).

While on tour, you will see where our students live and learn. Guests on the tour* will be taken into a dorm room (typically our most popular destination for guests on the tour). Have a camera handy for a "kodak" moment with your family posed by one of our campus fountains.

**Please note that only guests on our guided tours will be able to go into the dorm room. Guests on self-guided tours will not be able to go into a room.*

INFORMATION SESSIONS

Information sessions begin and end at the Office of Admission (Ashe Building, room 132). These sessions are ideal for prospective students and families to attend if you're thinking about applying for admission. During a campus information session, an admission counselor will discuss:

- Profile of our accepted students
- Admission process (required documents, deadlines, notification dates)
- Scholarships
- Financial Aid
- Academic programs
- Student Life

The admission counselor conducting your session will also field any specific questions you might have about admission and the university. So bring your questions and note taking material to jot down the answers.

CAMPUS TOUR AND INFORMATION SESSION SCHEDULE

The schedule changes according to the time of the year. For a complete schedule of our campus tours and information sessions, go to:

www.miami.edu/admission/tourschedule

We recommend that you arrive at least 5-10 minutes prior to the tour/information session you plan to attend. This will allow you time to complete our guest registration card and join the rest of the group for your tour/session.

WHERE CAN I GRAB A BITE TO EAT ON-CAMPUS?

We recommend:

- Stanford/Hecht or Mahoney/Pearson Dining Hall – all-you-can-eat buffet style, approximately \$8 (cash only) per person
- Hurricane Food Court: Jamba Juice, Nikos, The Oasis, Panda Express, Sbarro, Salsaritos, Sushi Maki, Wendy's and more
- The Rathskeller (located next to University Center) - indoor or patio seating, menu includes burgers, salads, chop-chop
- Starbucks (adjacent to Richter Library)
- Subway (located in School of Law quadrangle)