

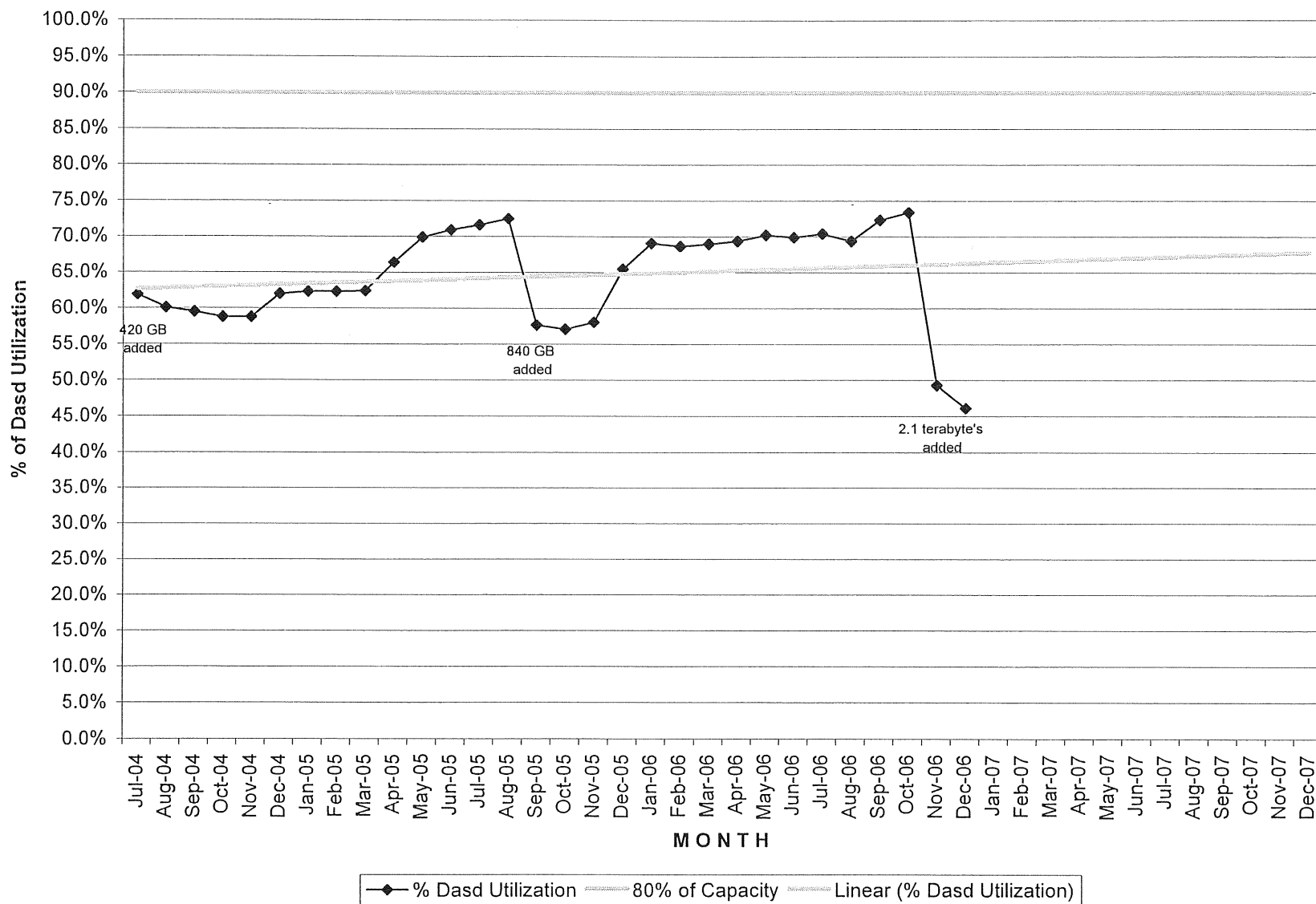
Reports to ITAC – January 9, 2007

Computer Operations:

The less than 5% downturn in DASD usage is due to storage released that was part of the final testing for the IDMS-DB2 conversion. Additional storage will be released over the coming months.

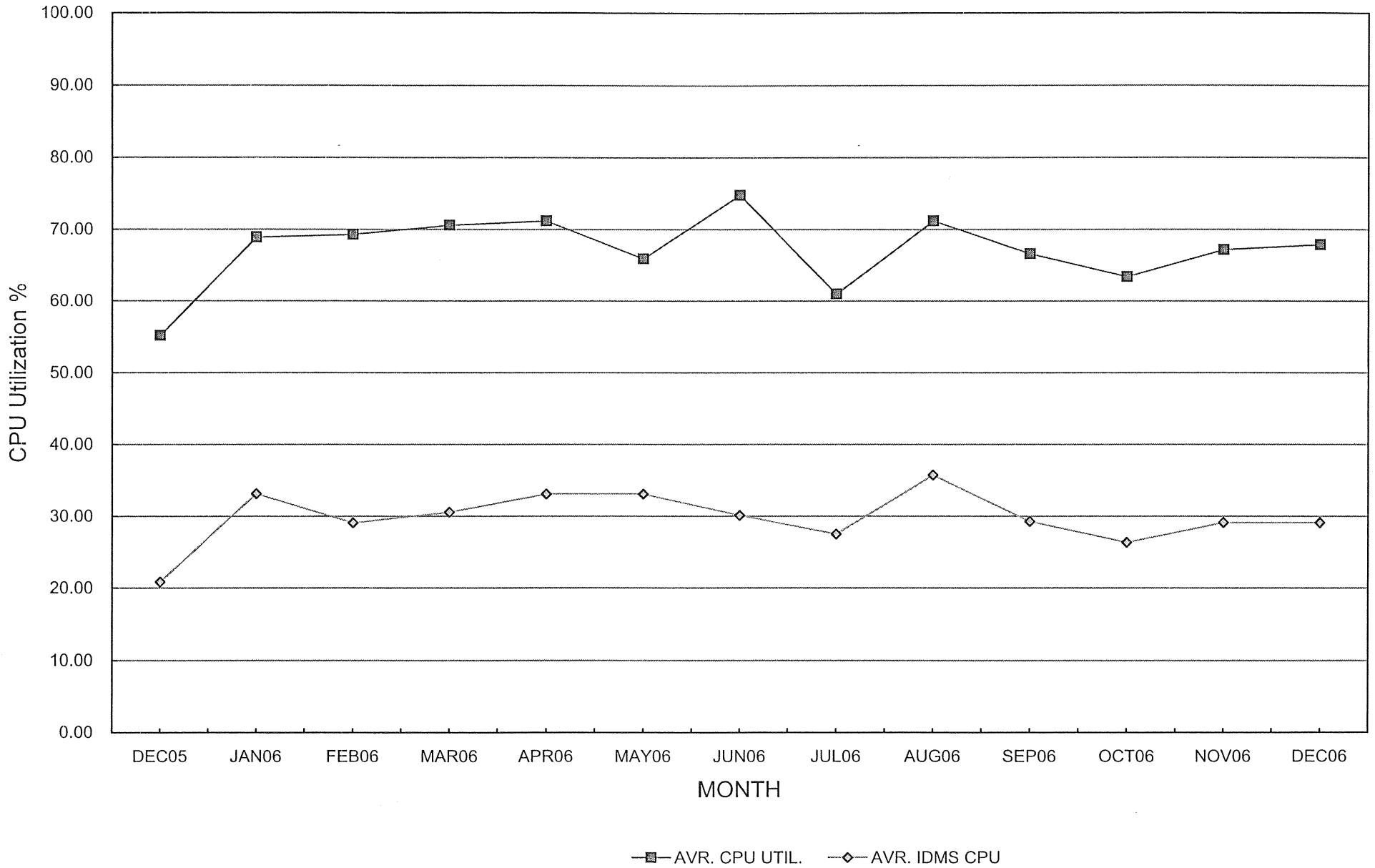
We will continue to monitor CPU utilization now that the IDMS-DB2 conversion is complete.

University of Miami
OS/390
Dasd Space Utilization



PEAK HOUR CPU UTILIZATION

09:00 - 11:00 and 14:00 - 16:00



24 HOUR CPU UTILIZATION

