

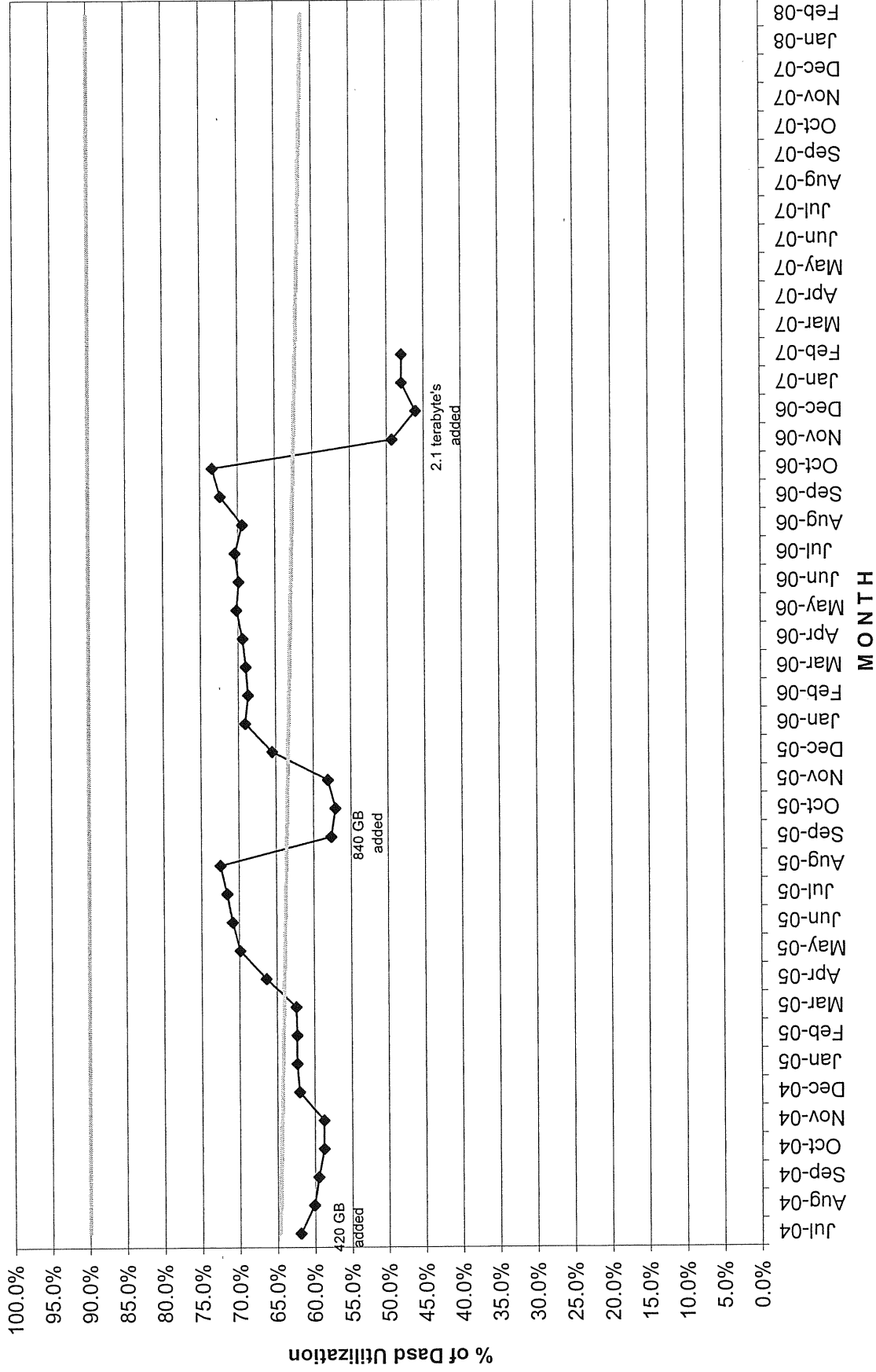
Reports to ITAC – March 13, 2007

Computer Operations:

DASD utilization has increased slightly but should be stable for the next two months. During the year-end cycle, we expect an increase in DASD storage but that should only last until August. Additionally, more storage is going to be released that was previously associated with the IDMS systems.

The sharp upturn in CPU utilization is due to the amount of CPU resources required to manage the new DB2 environment particularly while handling single event error conditions and recursive error conditions. Maintenance was applied to the system for the operating system, DB2, and CICS, as well as modification made to specific application transactions to eliminate most of these error conditions. IT is upgrading the CPU on March 18th to add 41 more MIPS to help create a more manageable safety buffer and reduce cost associated when activating Capacity on Demand on an as needed basis. We will continue to monitor CPU utilization.

University of Miami
OS/390
Dasd Space Utilization

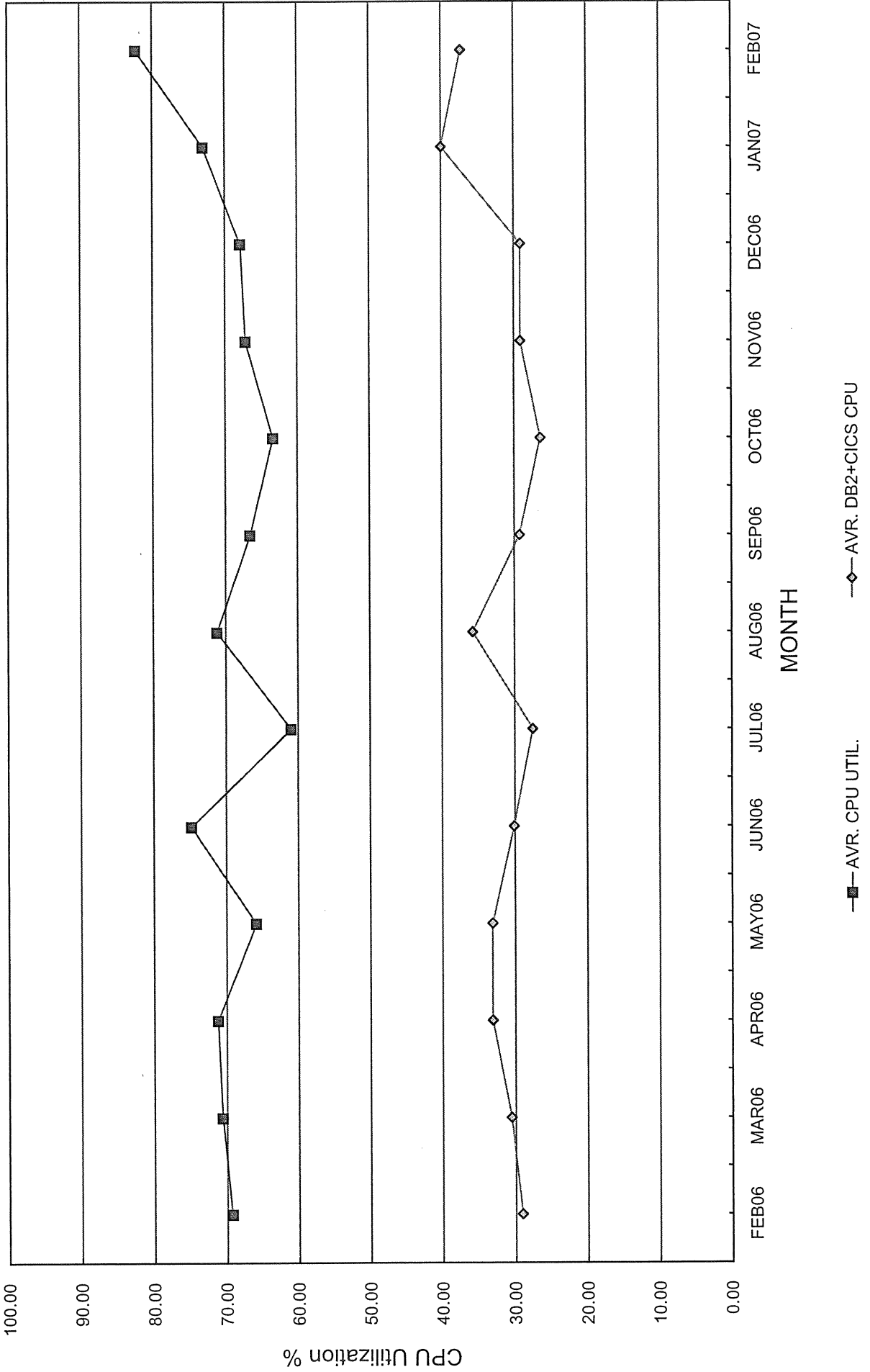


—◆— % Dasd Utilization 80% of Capacity Linear (% Dasd Utilization)

PEAK HOUR CPU UTILIZATION

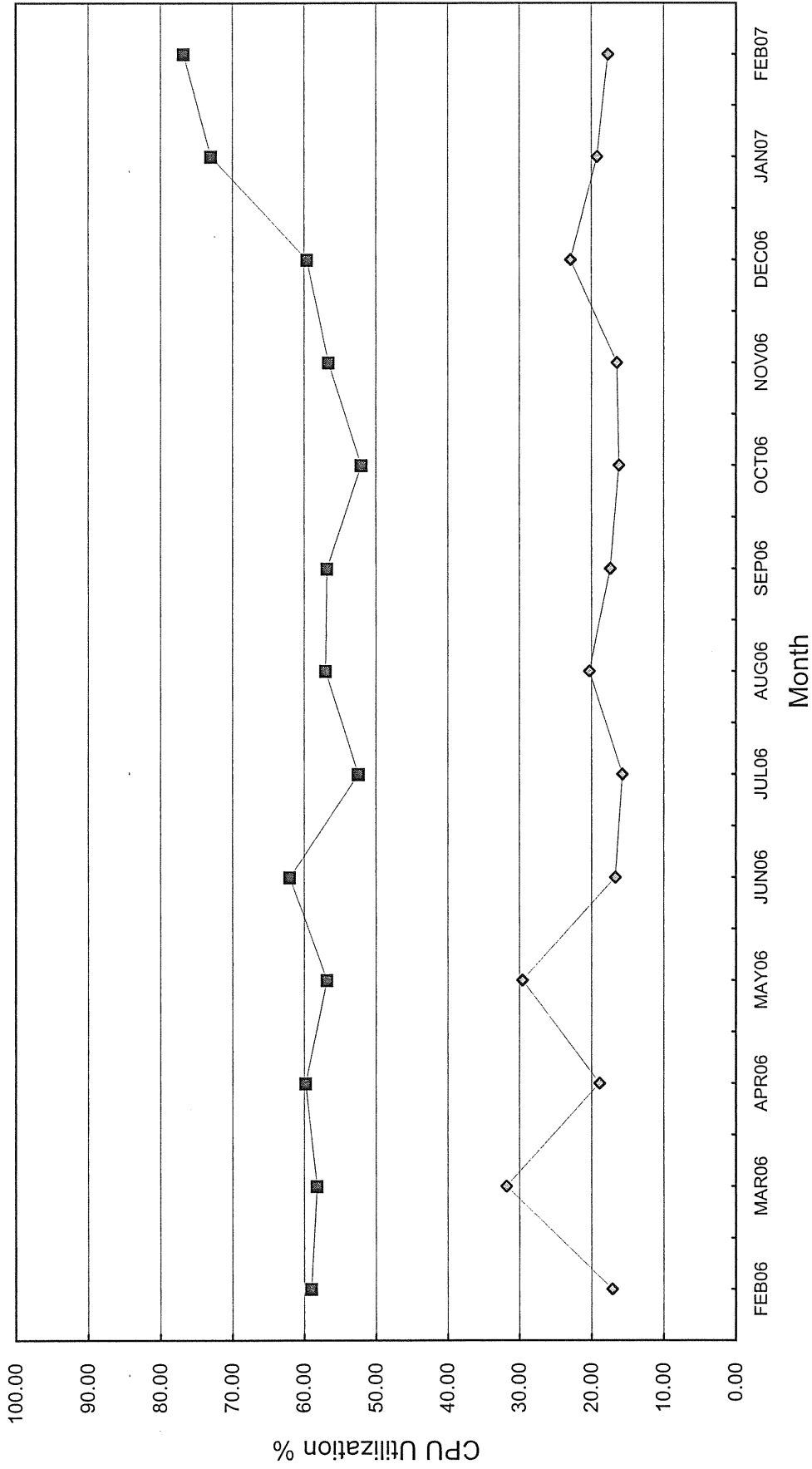
09:00 - 11:00 and 14:00 - 16:00

Note: DB2+CICS replaced IDMS - January 2007



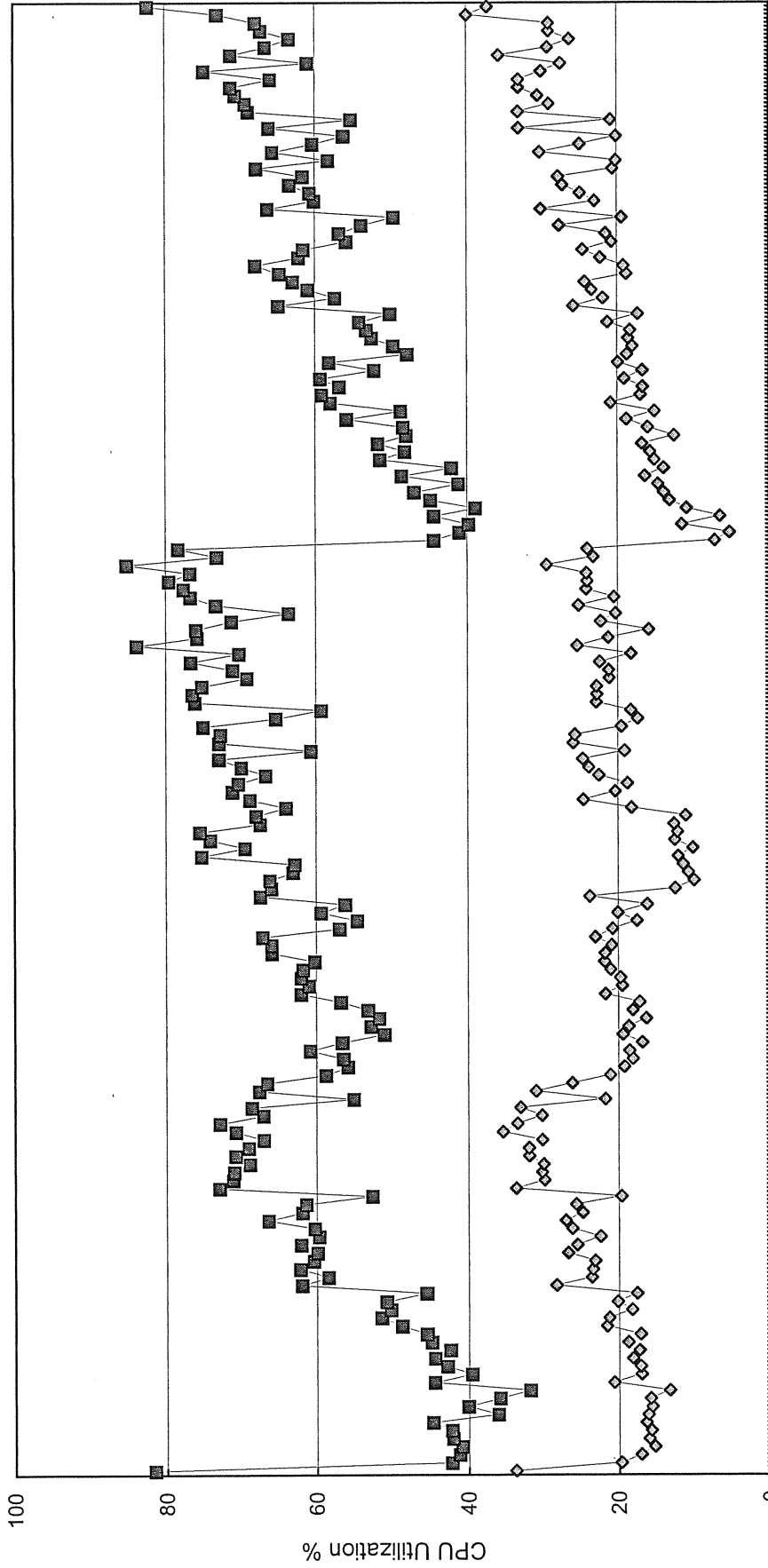
24 HOUR CPU UTILIZATION

Note: DB2+CICS replaced IDMS January 2007



■ AVR. CPU UTIL. ◆ AVR. DB2+CICS CPU

PEAK HOUR CPU UTILIZATION
09:00 - 11:00 and 14:00 - 16:00
 DB2+CICS Replaced IDMS - 01/2007



MAR 6.92 APR NOV93 JUN94 JAN95 AUG95 MAR96 OCT96 MAY97 DEC97 JUL98 FEB99 SEP99 APR00 NOV00 JUN01 DEC01 JUL02 FEB03 SEP03 APR04 NOV04 JUN05 JAN06 AUG06

MONTH

—■— AVR. CPU UTIL. —◆— AVR. DB2+CICS CPU